



XXVe
CONGRÈS
INTERNATIONAL
D'ARCHÉOLOGIE
CLASSIQUE



PARIS 3-9 JUIN 2024

Local and regional sculpture workshops in *Hispania*

Con la colaboración de



Julio C. Ruiz

julioruiz92@hotmail.es

X: @julioce_ruiz_

The *officinae* of *Tarraco*: local biocalcarenites from “*El Mèdol*”



○ Fig. 1. Friso acantiforme (Foto de M. Claveria).

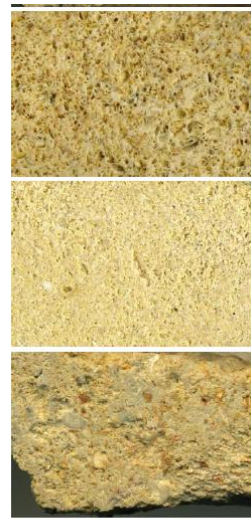


Figure 105. Macroscopic appearance of Miscene calcarenites to biocalcarenites from the surroundings and territory of Tarragona: stone from Roda de Berà, El Mèdol stone, *sollés* and Alifanella stone (from above to below).



○ Fig. 2. Vaso somatal de un monumento funerario (Archivo fotográfico del Museu Nacional Arqueològic de Tarragona).

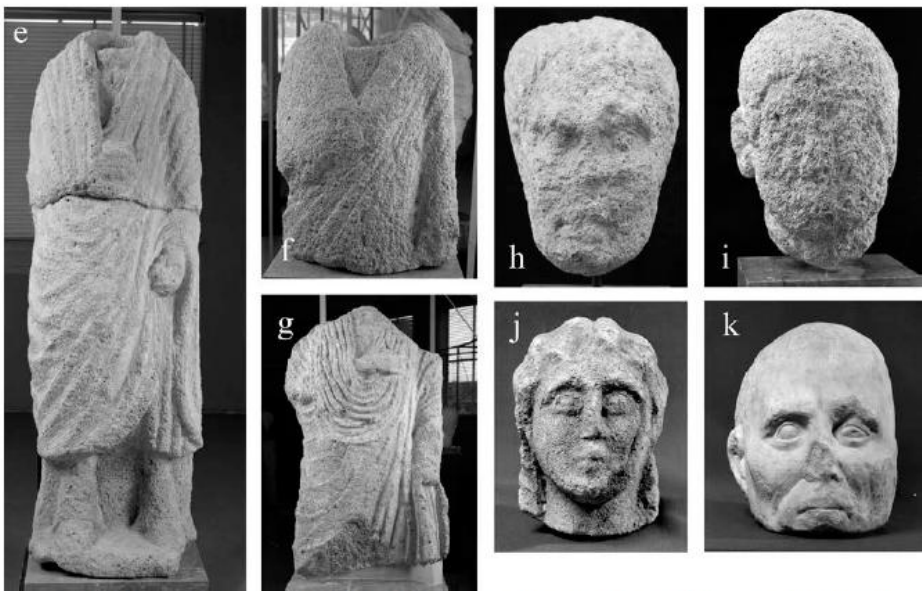
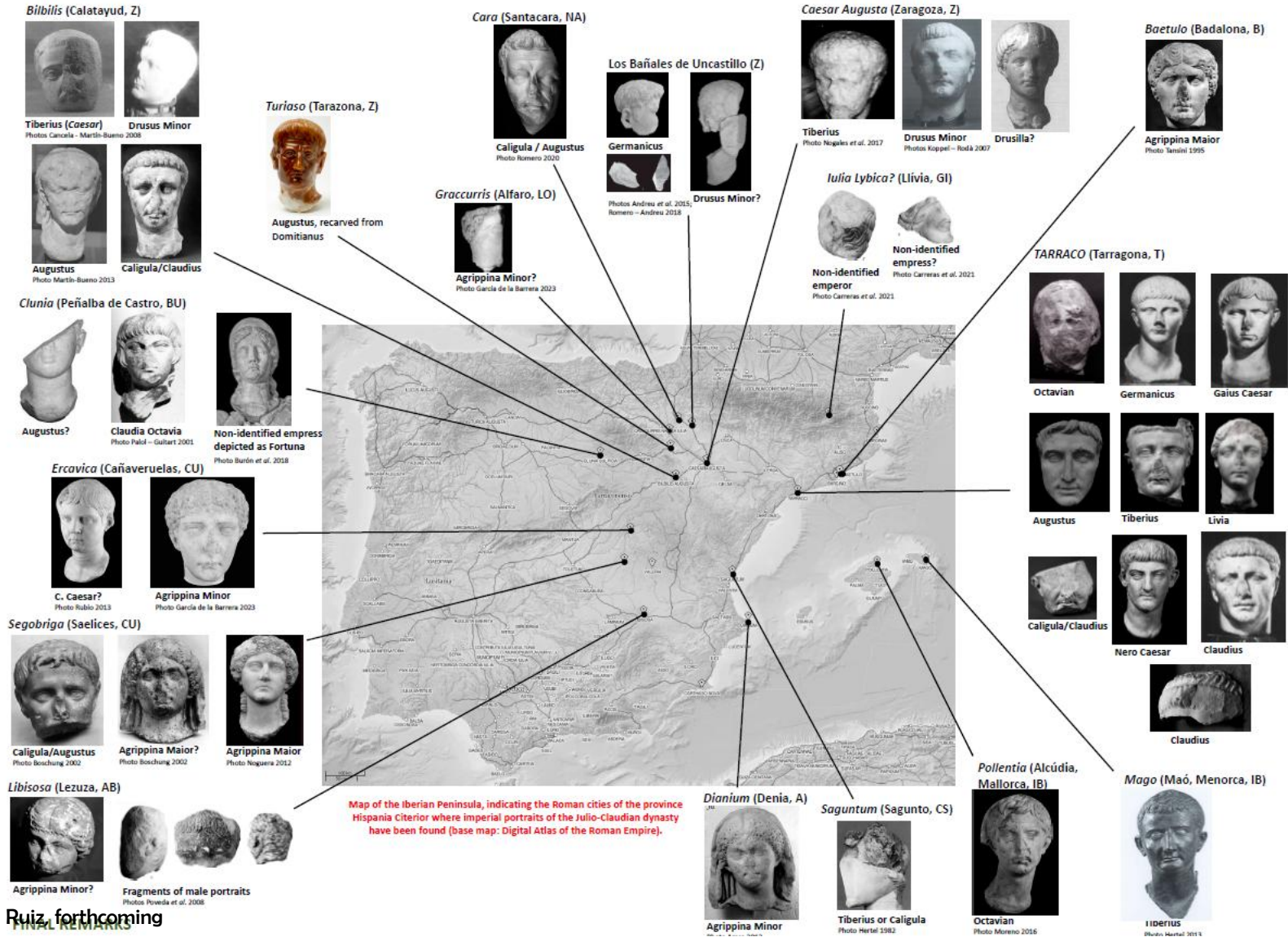


Fig. 37.2. Statue funerarie di Tarraco in pietra locale, datate tra seconda metà del I sec. a.C. e i primi decenni del I sec. d.C. (P. Witte - © archivio MNAT).

Koppel 1985; Koppel 2002; Koppel 2009; Ruiz 2018; Ruiz 2023; Ruiz, forthcoming

The *officinae* of *Tarraco*: a provincial scope?



Bilbilis (Calatayud, Z)
Tiberius (Caesar) Photos Cancala - Martí-Buño 2008
Drusus Minor
Augustus Photo Martí-Buño 2013
Caligula/Claudius

Tiberias (Tarazona, Z)
Augustus, recarved from Domitianus

Cara (Santacara, NA)
Caligula / Augustus Photo Romero 2020

Los Bañales de Uncastillo (Z)
Germanicus
Drusus Minor? Photos Andreu et al. 2015; Romero - Andreu 2018

Caesar Augusta (Zaragoza, Z)
Tiberius Photo Nagels et al. 2017
Drusus Minor Photos Koppel - Rodà 2007
Drusilla?

Baetulo (Badalona, B)
Agrippina Maior Photo Tamini 1995

TARRACO (Tarragona, T)
Octavian
Germanicus
Gaius Caesar
Augustus
Tiberius
Livia
Caligula/Claudius
Nero Caesar
Claudius
Claudius

Clunia (Peñalba de Castro, BU)
Augustus?
Claudia Octavia Photo Palés - Galart 2001
Non-identified empress depicted as Fortuna Photo Burón et al. 2018

Ercañica (Cañaveruelas, CU)
C. Caesar? Photo Rubio 2013
Agrippina Minor Photo García de la Barrera 2023

Segobriga (Saelices, CU)
Caligula/Augustus Photo Boschung 2002
Agrippina Maior? Photo Boschung 2002
Agrippina Maior Photo Noguera 2012

Libisosa (Lezuza, AB)
Agrippina Minor?
Fragments of male portraits Photos Poveda et al. 2008

Dianium (Denia, A)
Agrippina Minor

Saguntum (Sagunto, CS)
Tiberius or Caligula Photo Hertel 1982

Pollentia (Alcúdia, Mallorca, IB)
Octavian Photo Moreno 2016

Mago (Maó, Menorca, IB)
Iberius Photo Hertel 2013

Map of the Iberian Peninsula, indicating the Roman cities of the province Hispania Citerior where imperial portraits of the Julio-Claudian dynasty have been found (base map: Digital Atlas of the Roman Empire).

Ruiz, forthcoming

Barcino (Barcelona): the Montjuïc sandstone

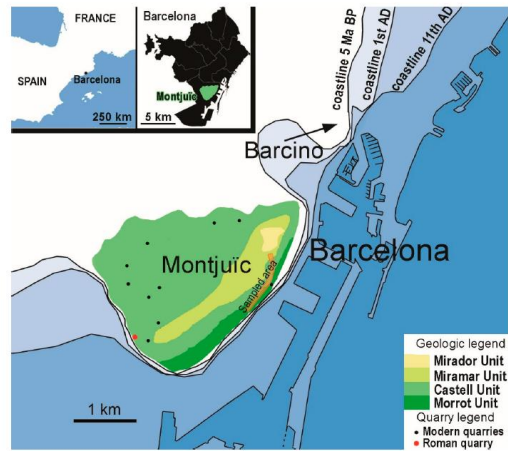


Figure 1. Geological map of the Montjuïc hill and its quarry sites. The position of Roman Barcino and the evolution of the coastline are also depicted. Upper insets: Location of Barcelona in Spain and location of Montjuïc within the Barcelona municipality.

Casas *et al.* 2020



Moreno 2018; Trillmich *et al.* 1993

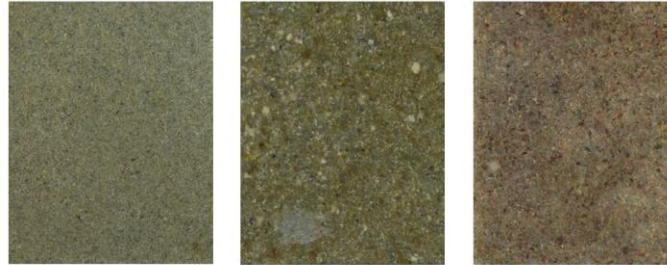


Figure 93. Three macroscopic photos of Montjuïc sandstone: the most common (left), a coarse grain variety (middle) and a pink/purple variety (right).

Gutiérrez 2009



Figure 6. The sampled archaeological pieces. (a) Togatus sculpture MAC-19008 found in the south-western sector of the city walls of Barcino. (b) Sculpture of a woman wearing a toga, MAC-19018, found in the south-eastern sector of the city walls of Barcino. (c) Togatus sculpture MAC-19075 found together with MAC-19008. (d) Stele on display at MdC, found between Zona Franca and Belvitge districts (Barcelona). (e) Frieze MdT-25992 decorated with acanthus scrolls motives, found in the Seu d'Egara precinct (Terrassa). (f) Acroterion MdT-26000 featuring a satyr head, found together with MdT-25992. Red arrow indicates the location of the retrieved samples.

Casas *et al.* 2020

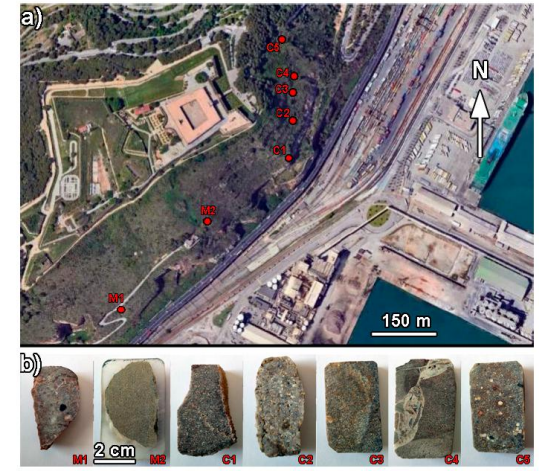
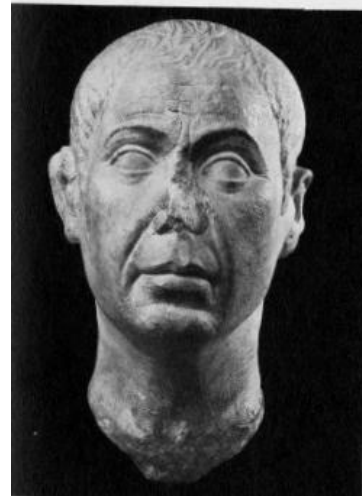
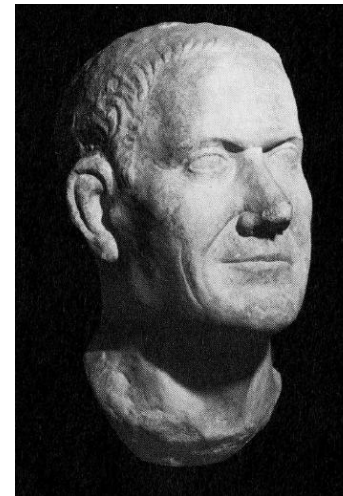
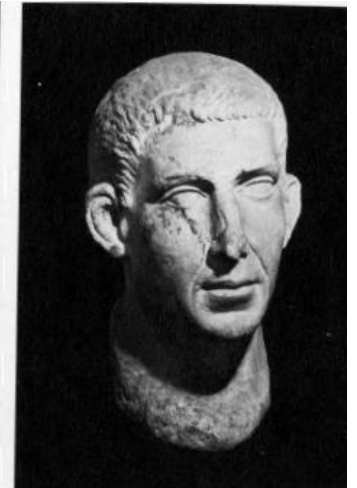
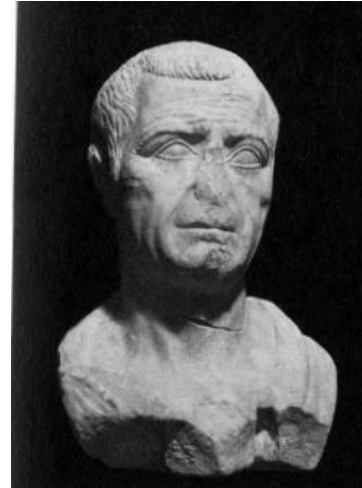
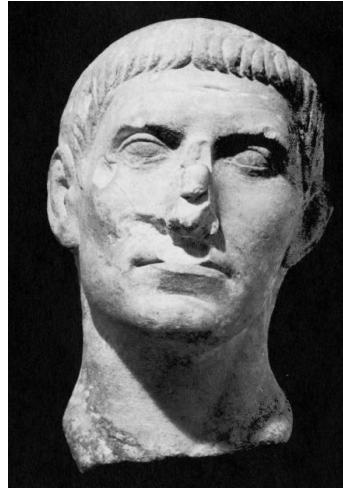
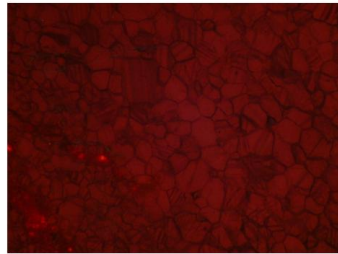
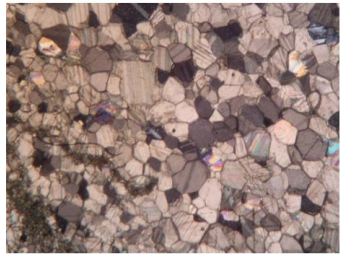


Figure 5. (a) Satellite image where some representative sampling sites (red dots) along the Montjuïc cliff have been highlighted; (b) the corresponding samples, belonging to Morrot (M1 and M2) and Castell (C1 to C5) units. To note: M2 corresponds to a calcite nodule from the upper Morrot unit; silicified late fractures are clearly seen in C4 sample and sample C1 (right side).



Claveria 2018

Barcino (Barcelona): local portraits made in Luni-Carrara marble



Typical microscopic and macroscopic appearance of the white marble from Luni-Carrara

Marbre calcari

- amb grans orientats que indiquen la presència de metamorfisme deformatiu: Retrat 4123.
- sense orientació de grans
 - gra petit: 4090
 - 4122
 - 8280
 - 9576
 - gra mitjà: 8279
 - 8701

REFERENCES: Rodà 1980; Rodà 1984; Rodà 1990; Rodà 2002; Rodà 2009

Local productions in Montjuïc sandstone beyond *Barcino*



Figure 6. The sampled archaeological pieces. (a) Togatus sculpture MAC-19008 found in the south-western sector of the city walls of *Barcino*. (b) Sculpture of a woman wearing a toga, MAC-19018, found in the south-eastern sector of the city walls of *Barcino*. (c) Togatus sculpture MAC-19075 found together with MAC-19008. (d) Stele on display at MdC, found between Zona Franca and Bellvitge districts (Barcelona). (e) Frieze MdT-25992 decorated with acanthus scrolls motives, found in the Seu d'Ègara precinct (Terrassa). (f) Acroterion MdT-26000 featuring a satyr head, found together with MdT-25992. Red arrow indicates the location of the retrieved samples.



Locations in the province of Barcelona where sculptures from the workshop of *Barcino* have been found (Rodà 2009)



Fig. 2. Tres esculturas del monumento funerario en forma de edicula de Can Pexau. Museu de Barcelona, inv. n.ºm. 3795 (a), 3796-3797 (b) y 3799 (c). Fot. L. Rodà.



Fig. 4. Estatua femenina fragmentaria de Mataró. Museu de Mataró (inv. n.ºm. 1739). Fot. R. Manent.

Augusta Emerita and the Estremoz Anticline marble

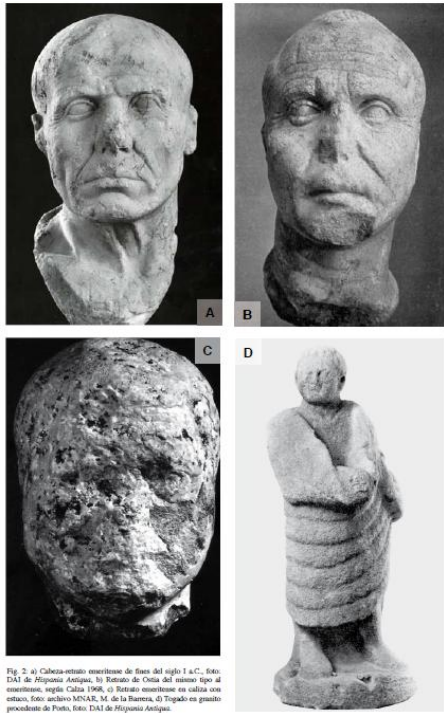


Fig. 2. a) Cabeza-estrato emeritense de fines del siglo I a.C., Foto: DAI de Hispania Antigua; b) Retrato de Calpa del mismo tipo al orientismo, según Calia 1968; c) Retrato emeritense en caliza con enteco, foto: archivo MNAE, M. de la Barrera; d) Trigada en granito procedente de Pisto, foto: DAI de Hispania Antigua.

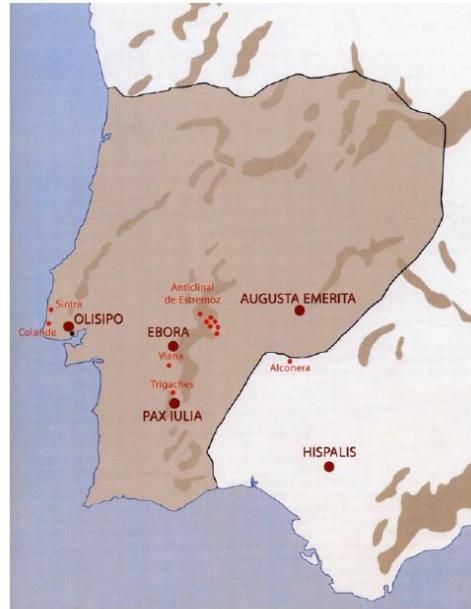


Fig. 6. Mapa de contornos límites de mármol y calizas ornamentales de Pisco y Muñoz 2006.

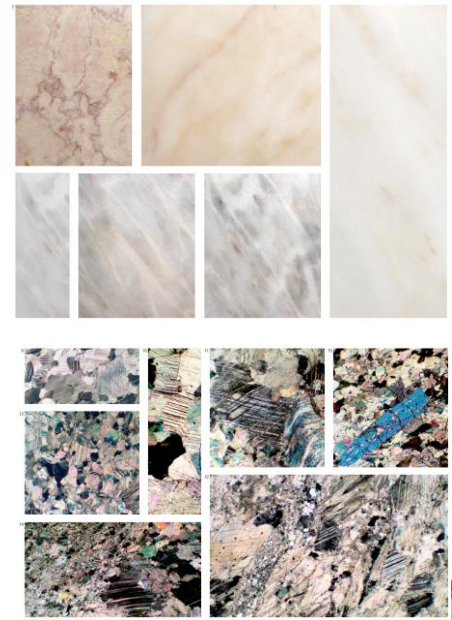


Fig. 10. a) Rigado imitado de Butha, foto: de Pisco y Muñoz 2006; b) primer machuelo de la cantera de Butha, foto: Nogales; c) perfil con la grieta original en la base de una estela del foro colonial, foto: DAI de Hispania Antigua; d) Forma de la «Grieta del foro del arca», Clara Antón, machuelo del I a.C., foto: MNAE; e) Forma de Estremoz, «Grieta» opuesta a machuelo del I, II, III, foto: el Museo, foto: DAI de Hispania Antigua.

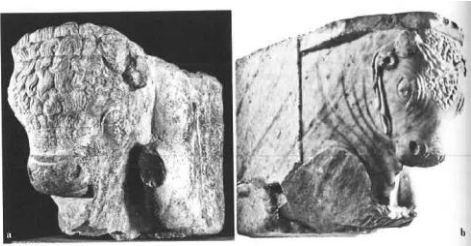
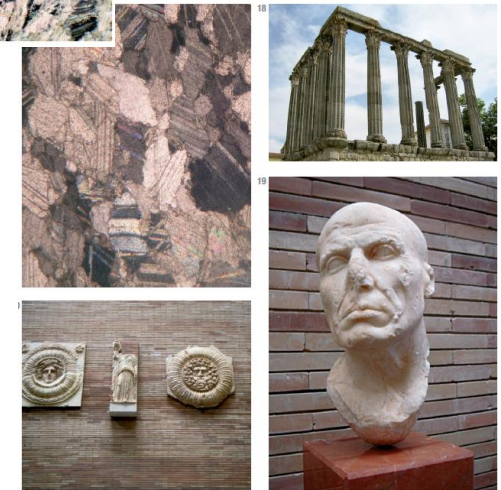


Fig. 4. Pértigas de toro como clave de arco de Augusta Emerita, lo Curia.

Nogales *et al.* 2008; Nogales 2009; Nogales 2011; Nogales 2013; Nogales *et al.* 2014; Nogales *et al.* 2015; Nogales *et al.* 2017

Local and regional sculpture workshops in *Hispania*

Baetica: remarks on marbles and *officinae*

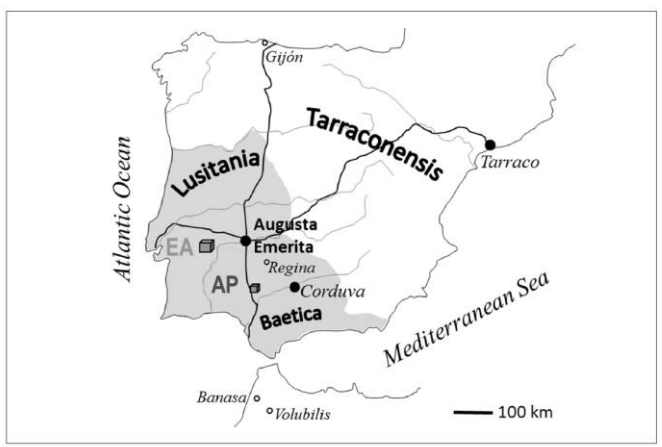
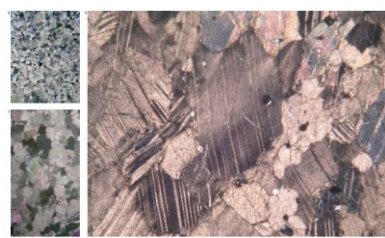
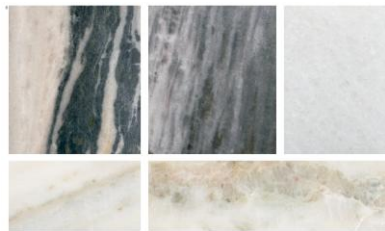


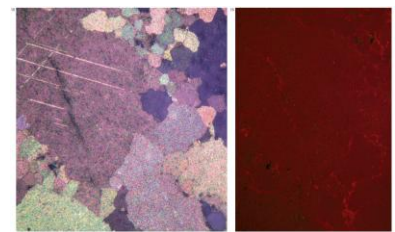
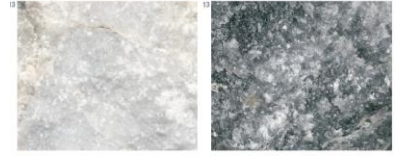
Fig. 1. Geographical setting of *Augusta Emerita*, capital of Roman Lusitania, the Estremoz Anticline (EA) and the Almadén de la Plata (AP) marble districts. Location on the archaeological sited cited in the text are given.



The reddish stone from El Torcal de Antequera (Málaga)



Marble from Almadén de la Plata (Sevilla)



Marble from Sierra de Mijas (Málaga)



Statues made of Almadén de la Plata marble (Beltrán 2010)



Statues made of Mijas marble. (Beltrán 2010)

León 1993; León 2001; Pensabene 2006; León 2009; Beltrán 2010; Beltrán 2013; León 2022